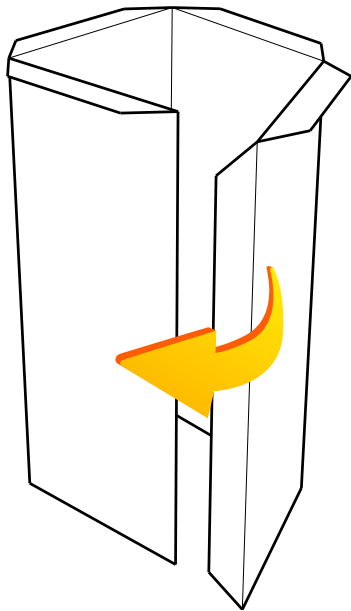


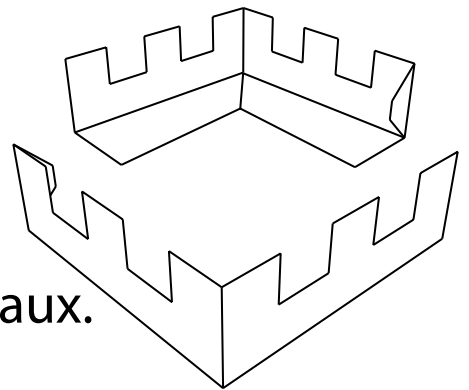
Grande Tour: Toiture
et créneaux.



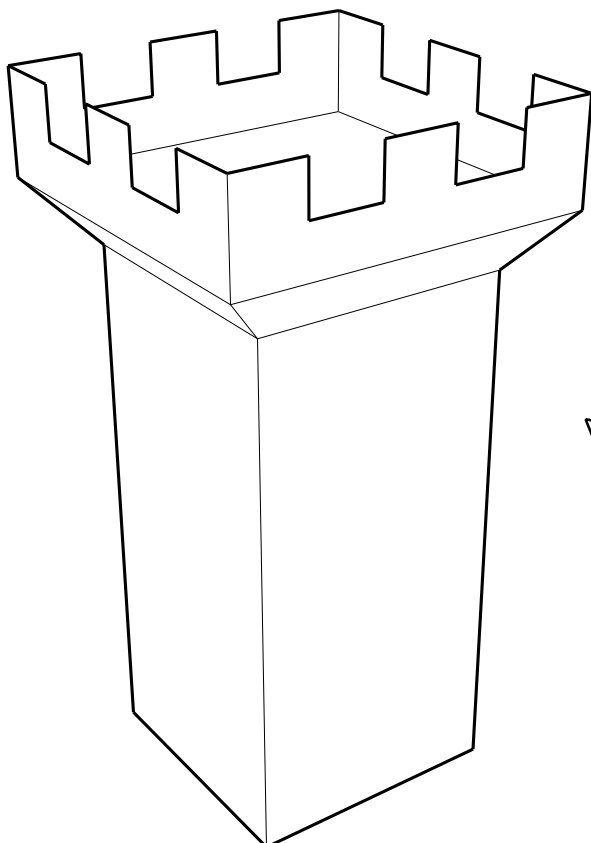
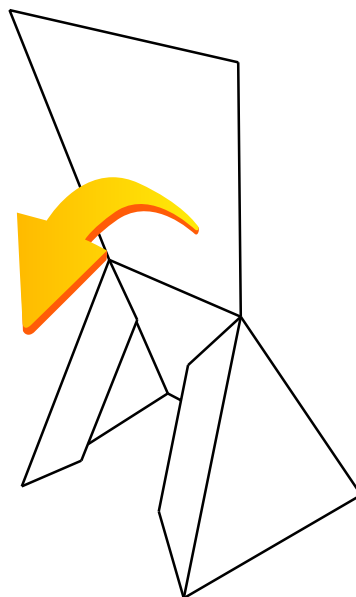
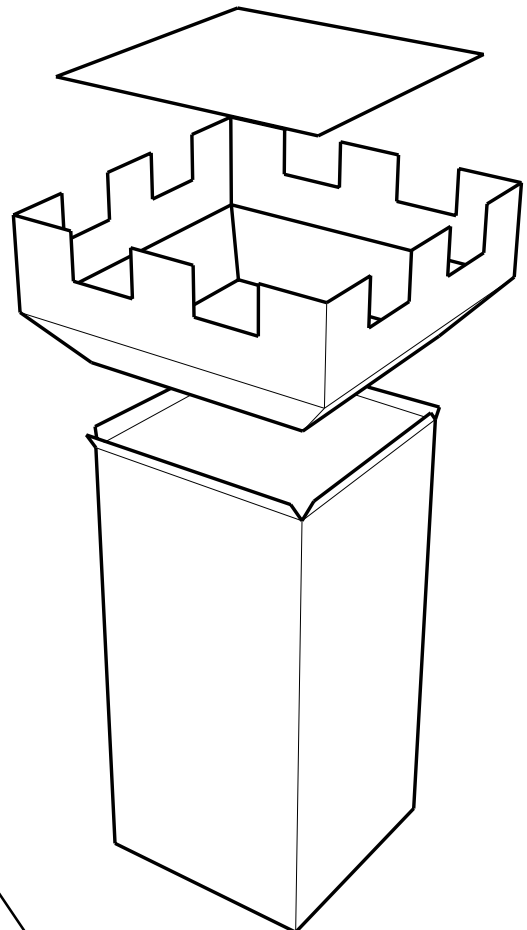
1. Les murs de la tour.



2. Les créneaux.

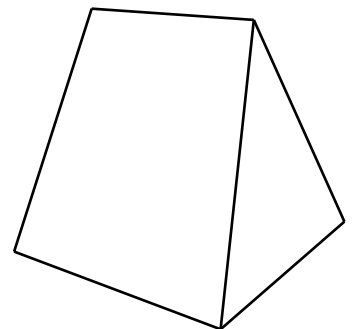


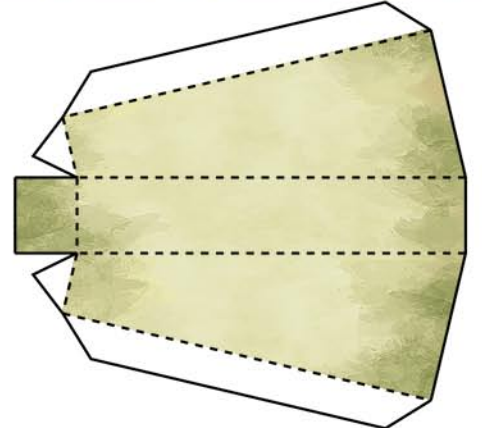
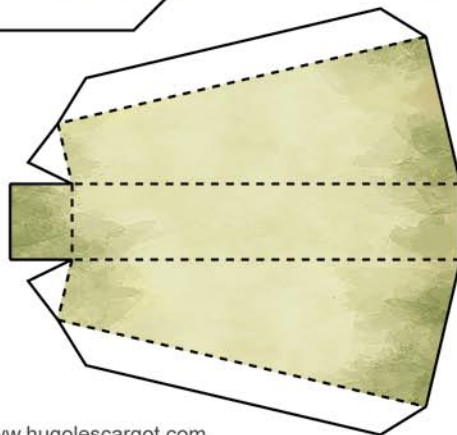
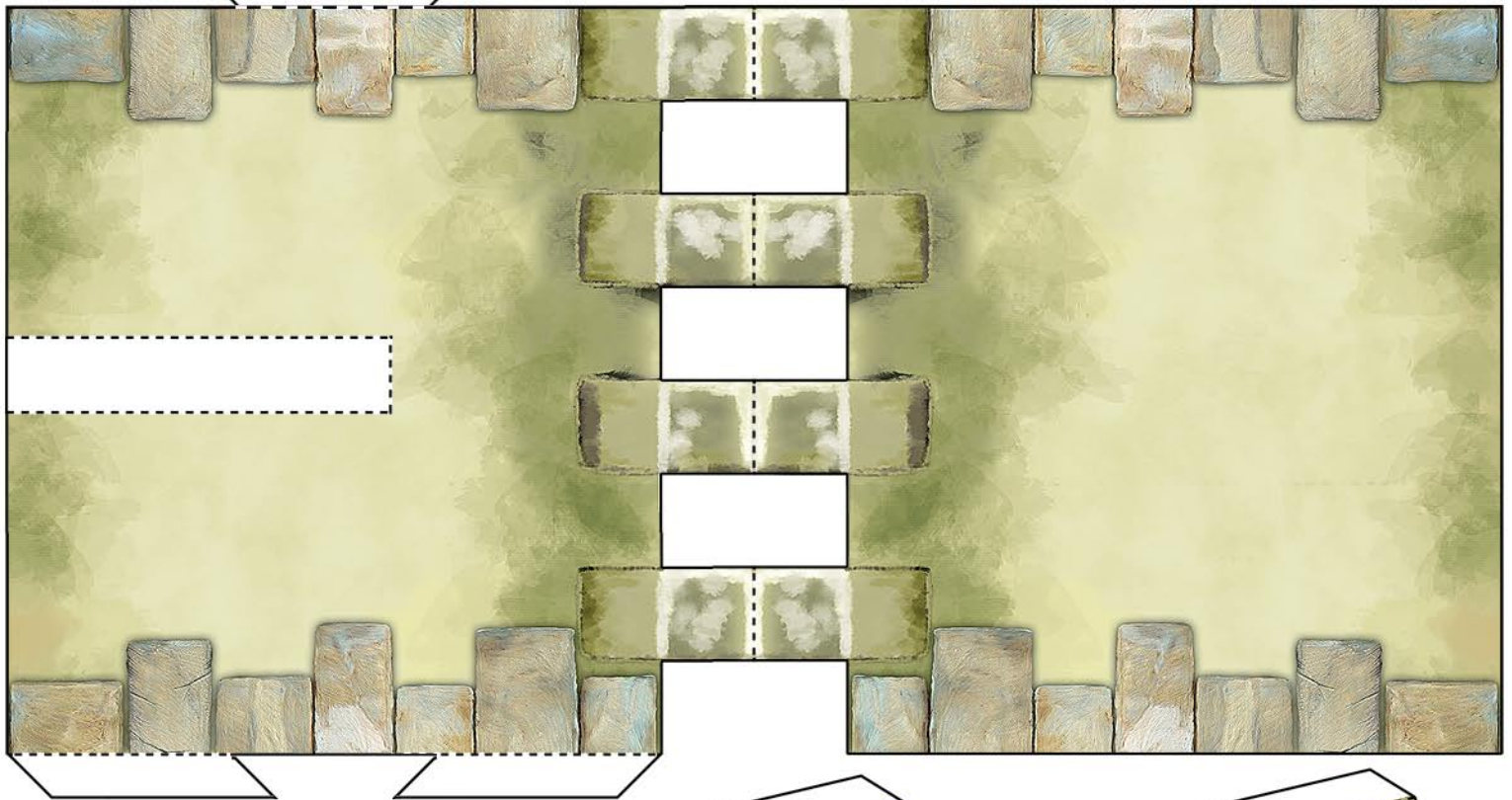
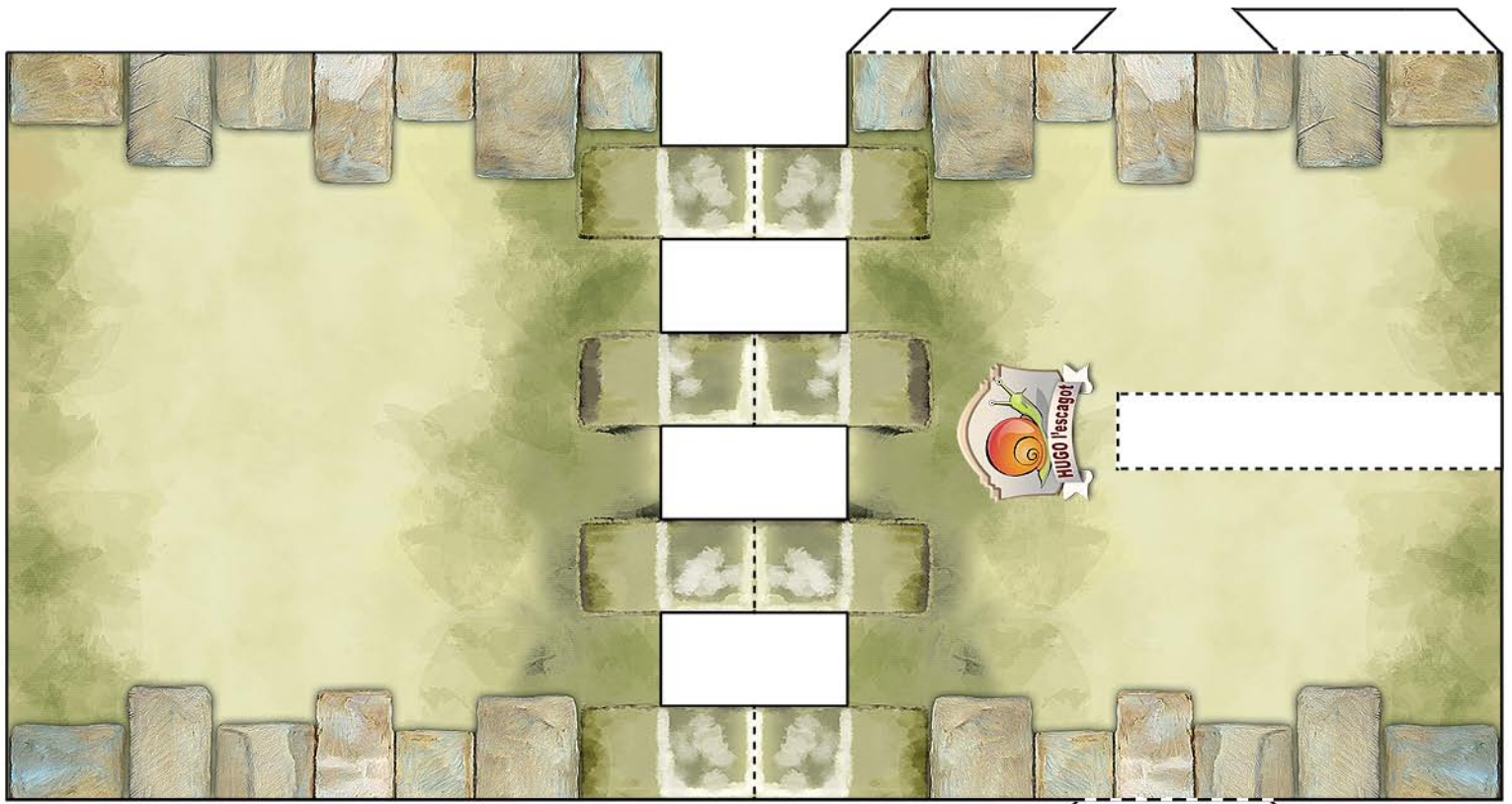
3. Poser le sol dans les créneaux et coller les créneaux sur les murs.



La grande tour finie.

4. Plier et coller le toit.

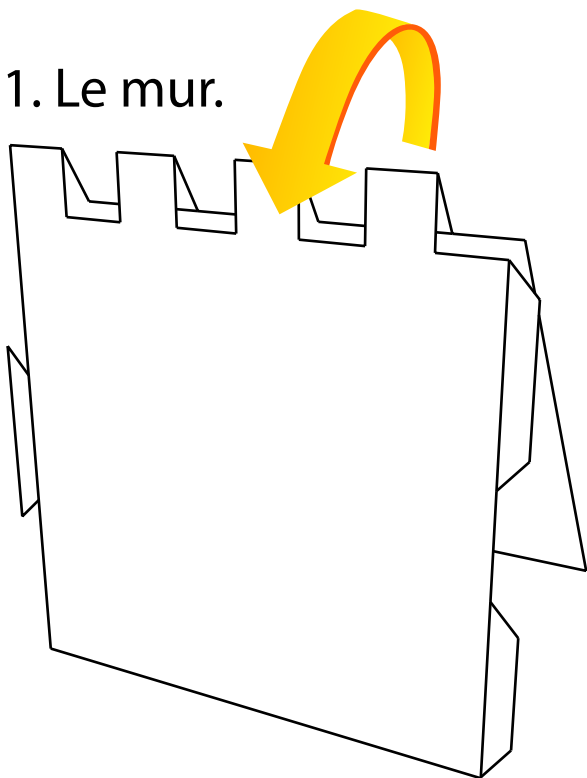




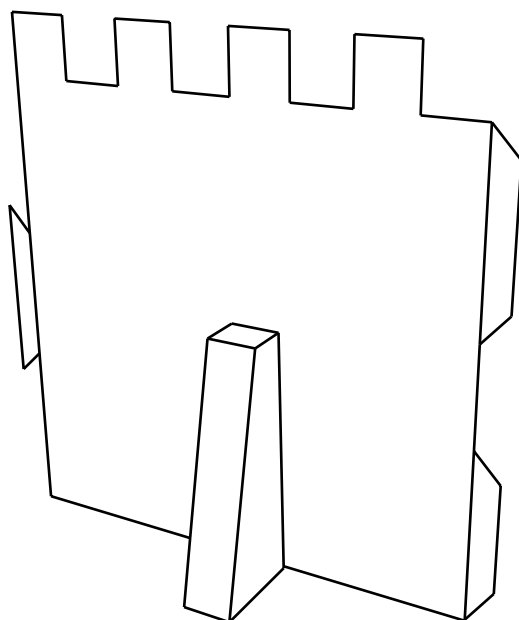
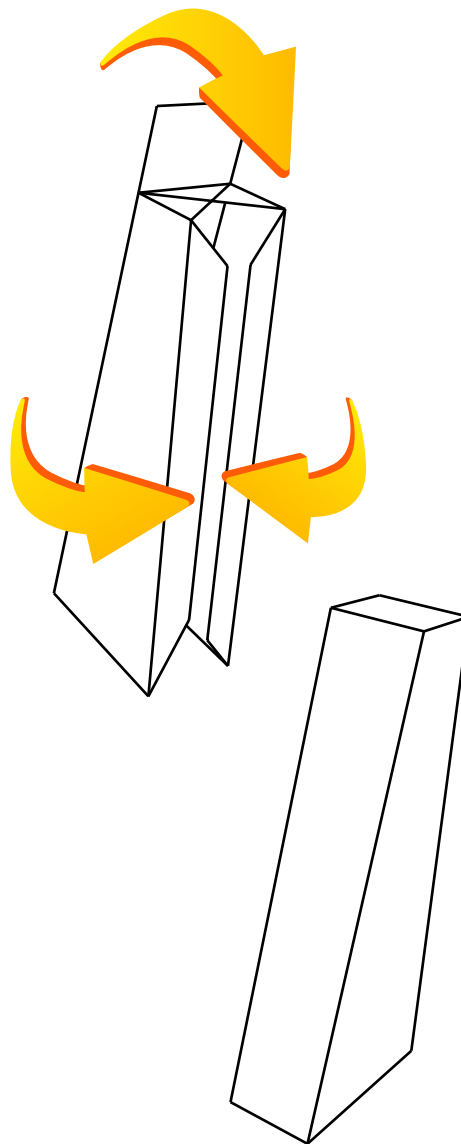
Murs du château (x2).



1. Le mur.

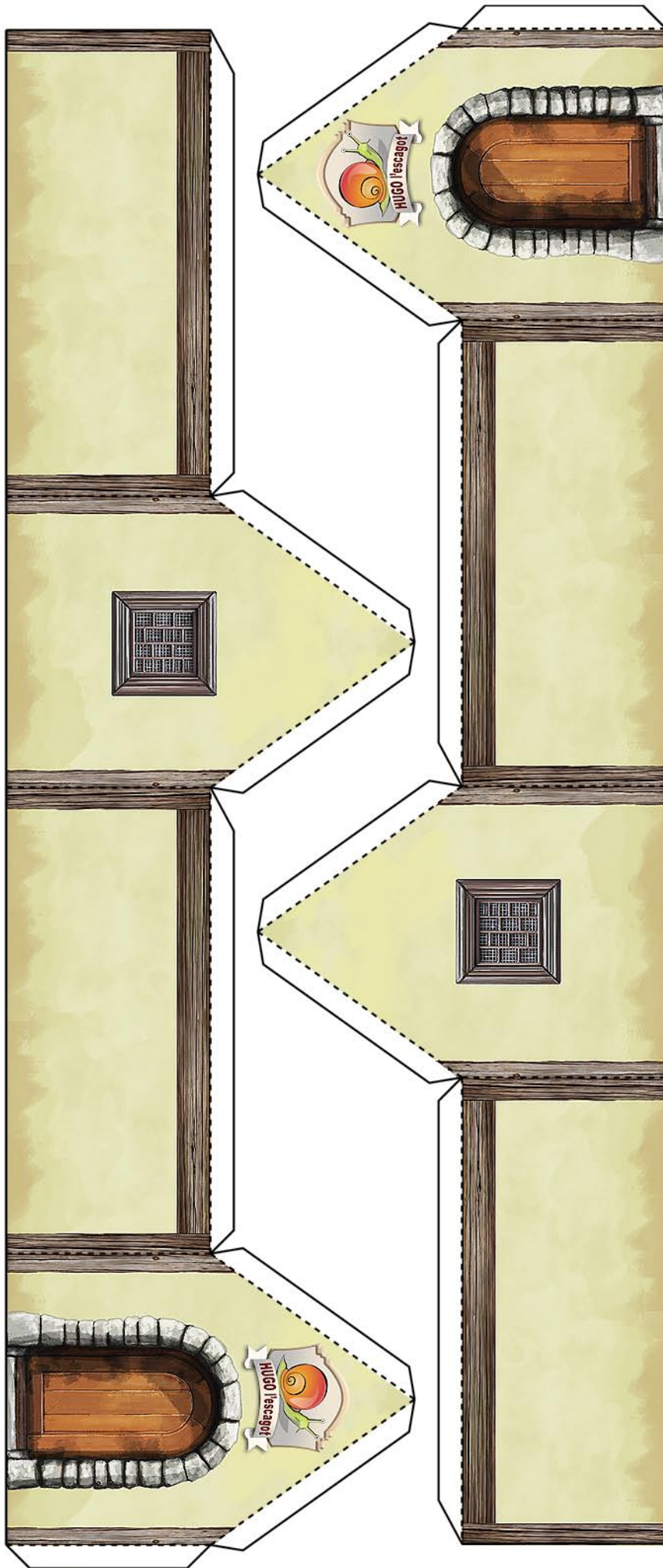


2. Le support du mur.



3. Coller le support sur le mur.



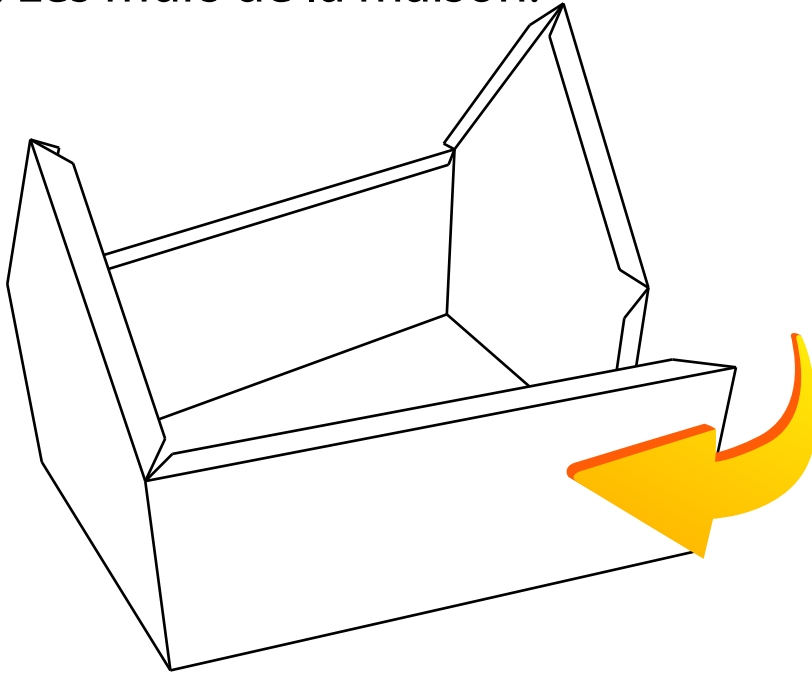


Petite maison (x2).

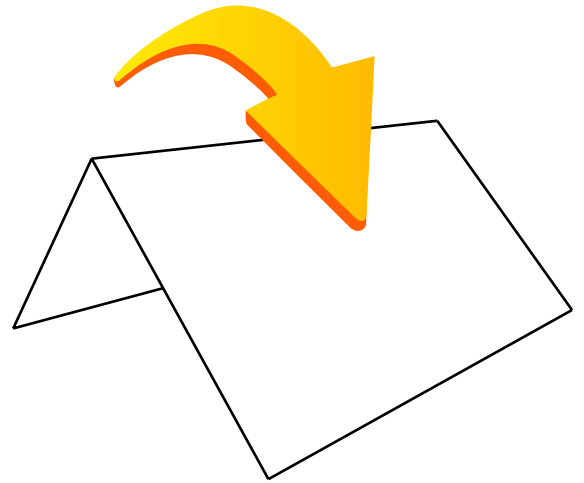
Copyrights 2008 www.hugolescargot.com.

Tous droits réservés. Ce fichier est destiné à une utilisation personnelle et ne peut être vendu.

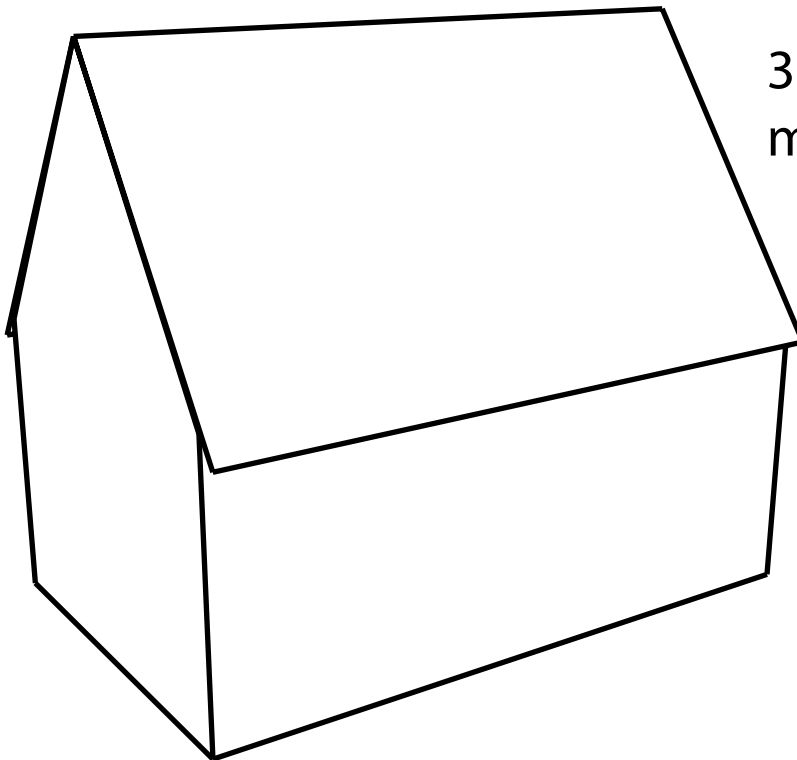
1. Les murs de la maison.

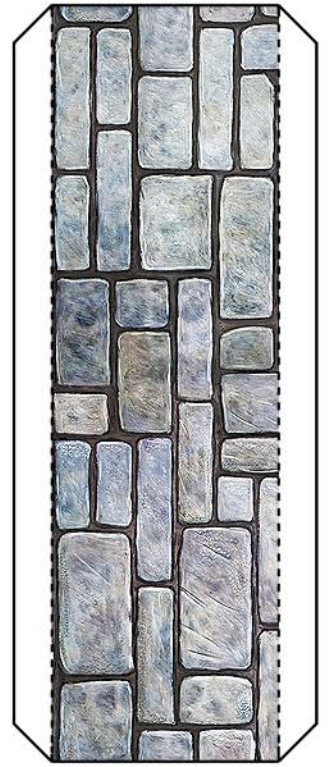
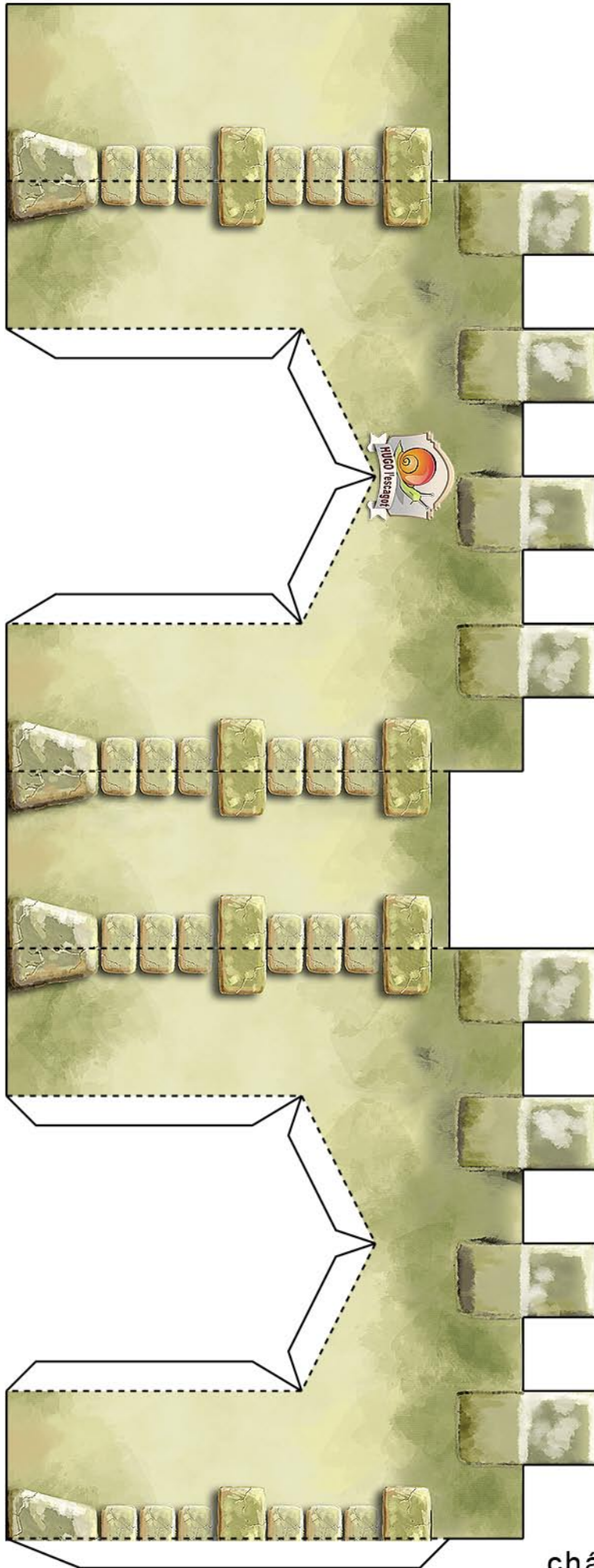
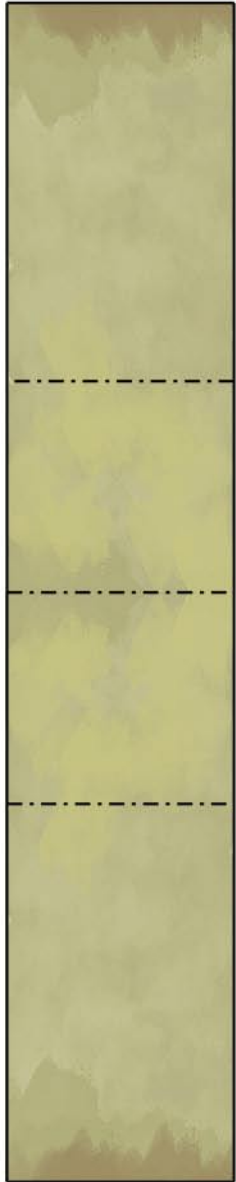


2. Le toit de la maison.



3. Coller le toit sur les murs de la maison.

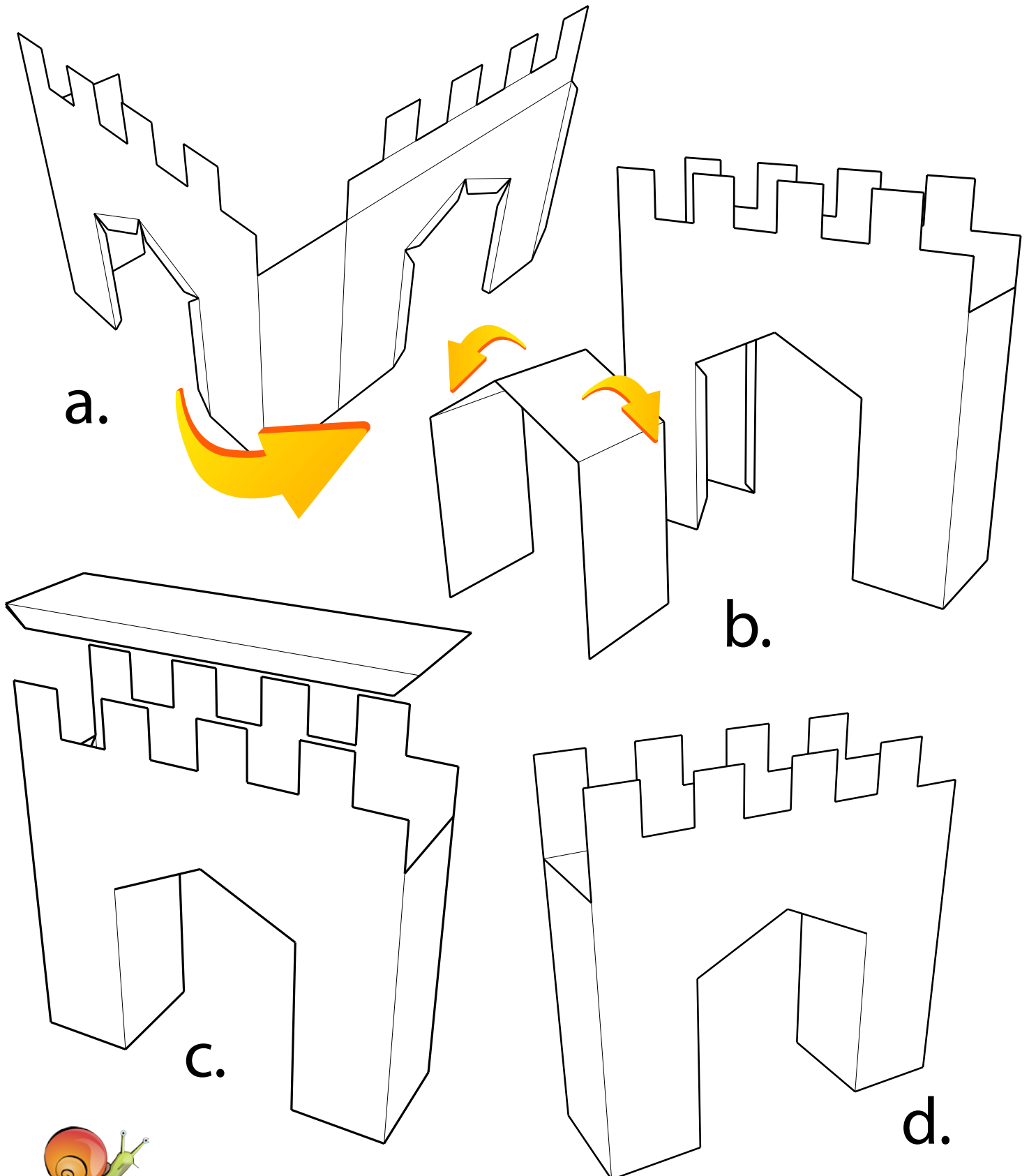


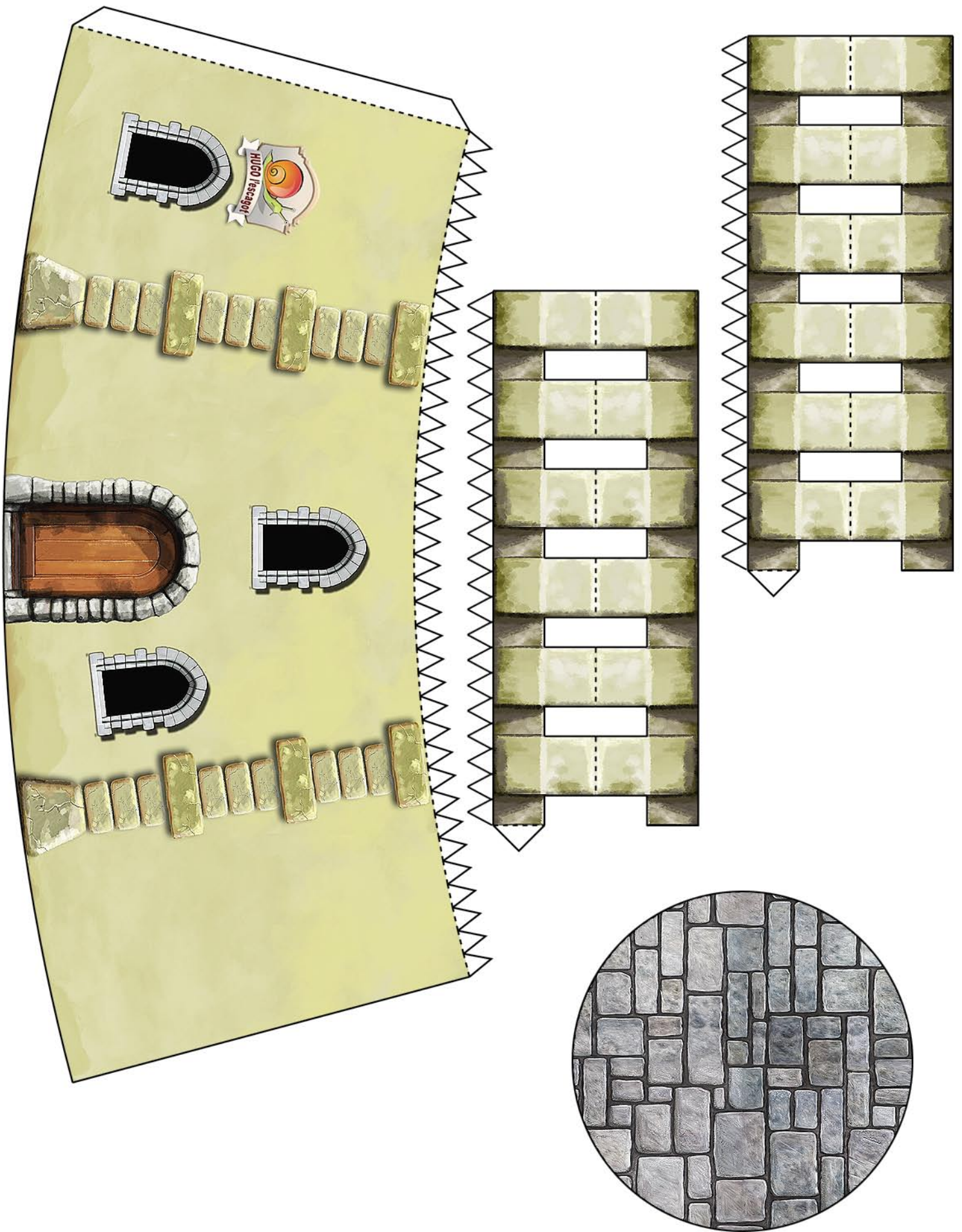


Porte d'entrée du
château et son échelle.



1. La porte



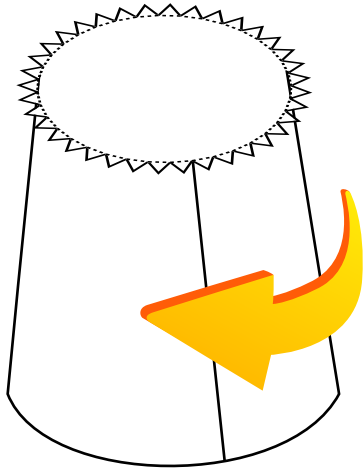


Tour ronde.

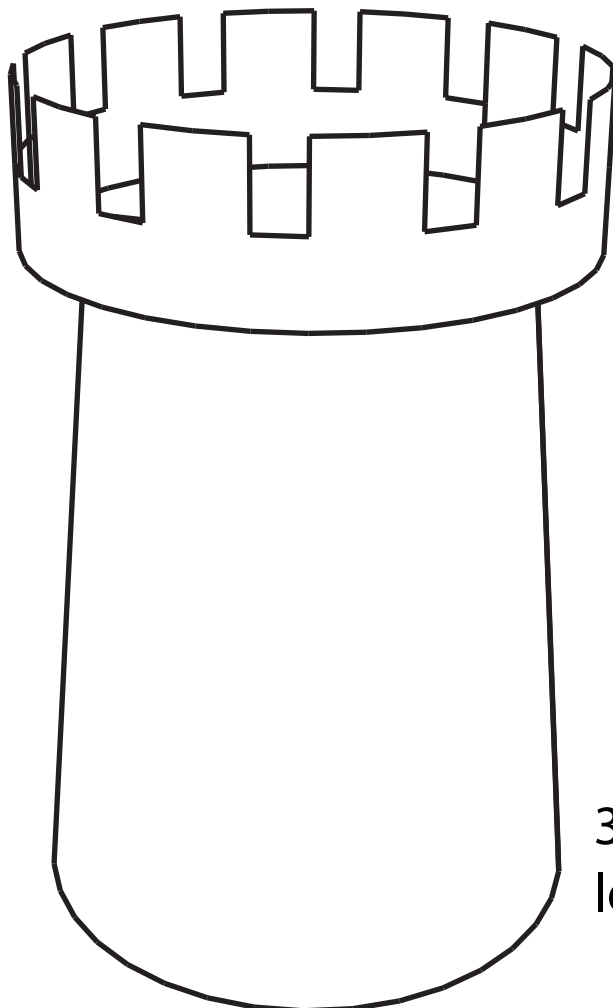
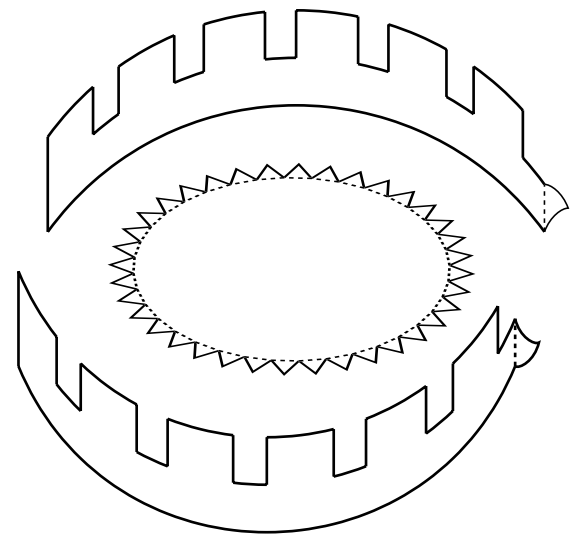
Copyrights 2008 www.hugolescargot.com.

Tous droits réservés. Ce fichier est destiné à une utilisation personnelle et ne peut être vendu.

1. Les murs de la tour ronde.

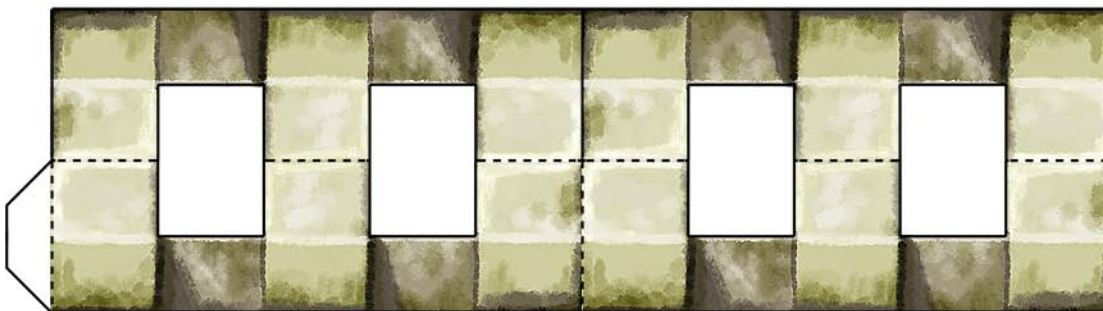
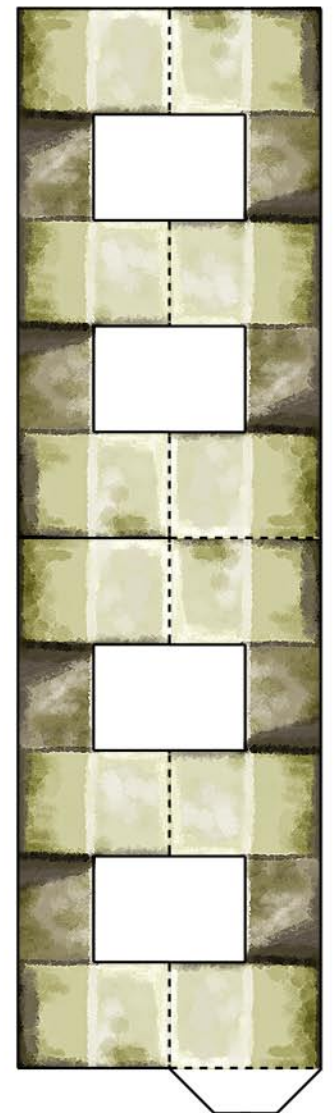
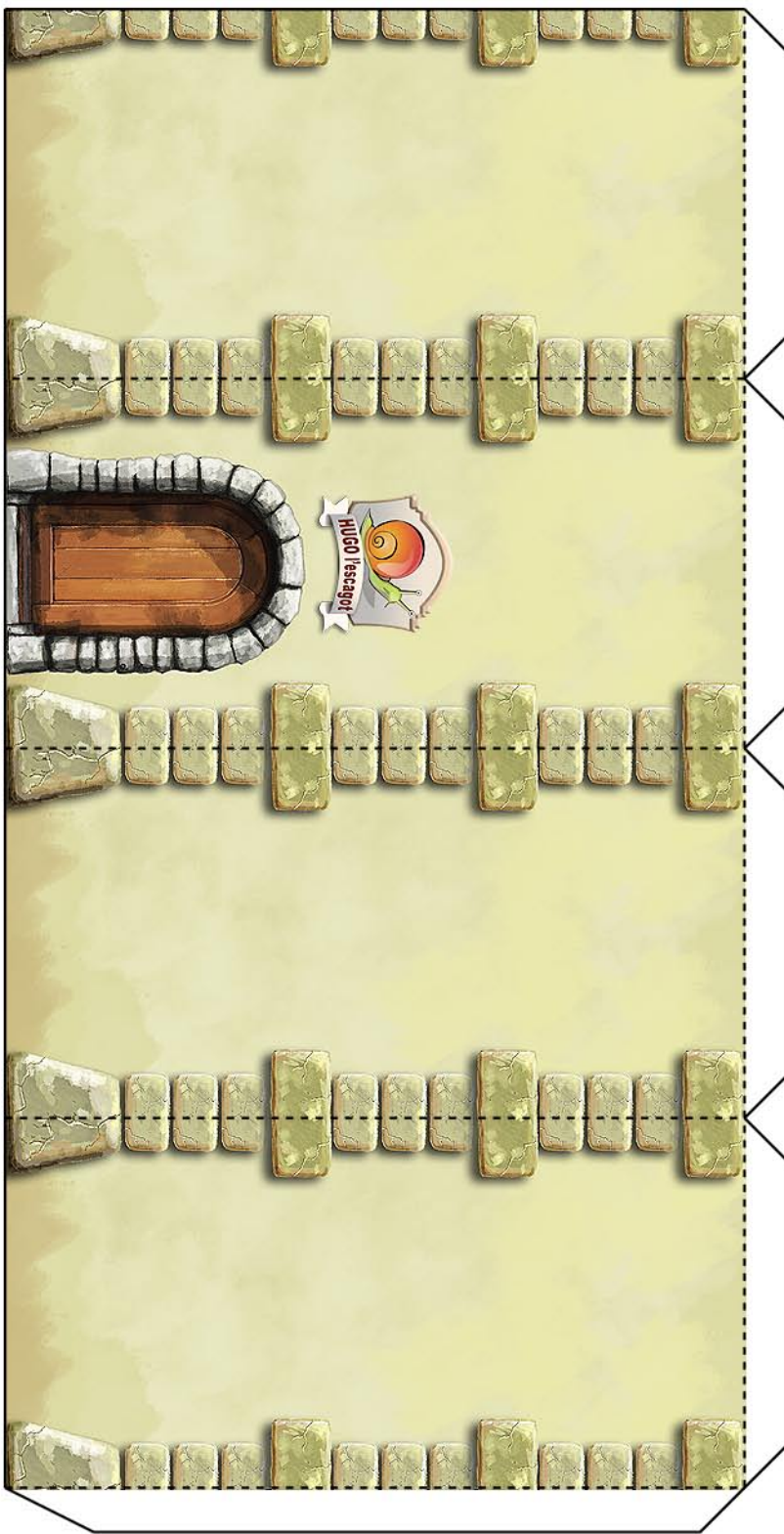


2. Coller les créneaux autour du plafond.



3. Coller les créneaux sur les murs de la tour.



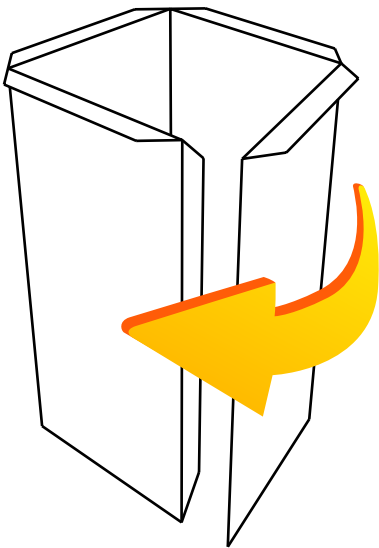


Petite Tour.

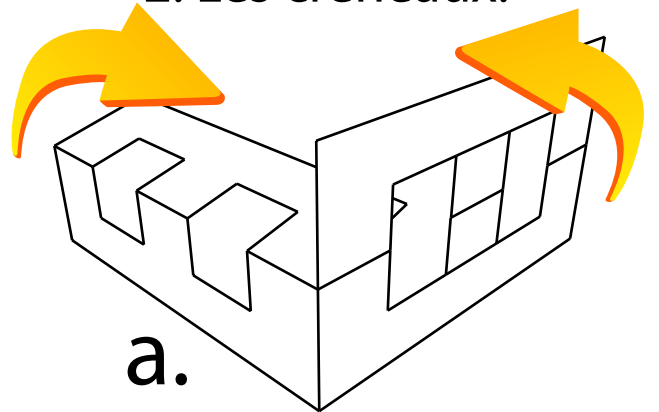
Copyrights 2008 www.hugolescargot.com.

Tous droits réservés. Ce fichier est destiné à une utilisation personnelle et ne peut être vendu.

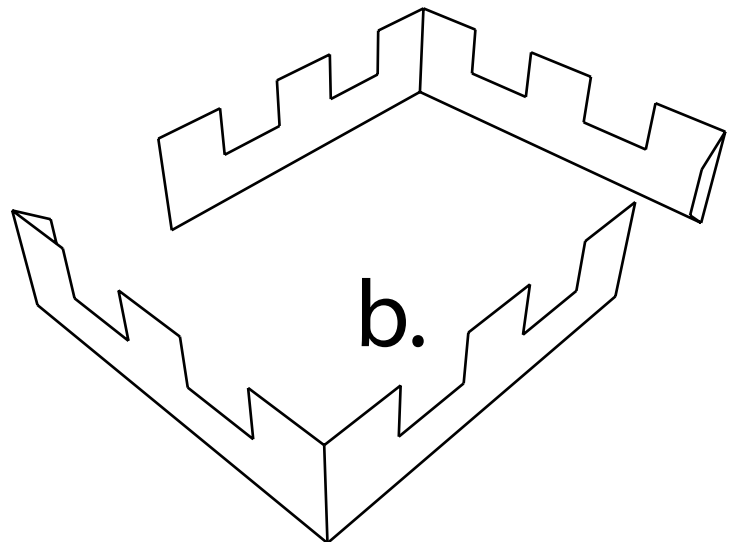
1. Les murs de la petite tour.



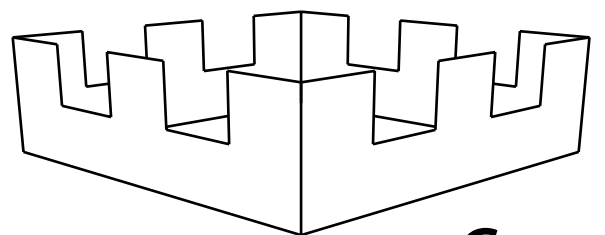
2. Les créneaux.



a.

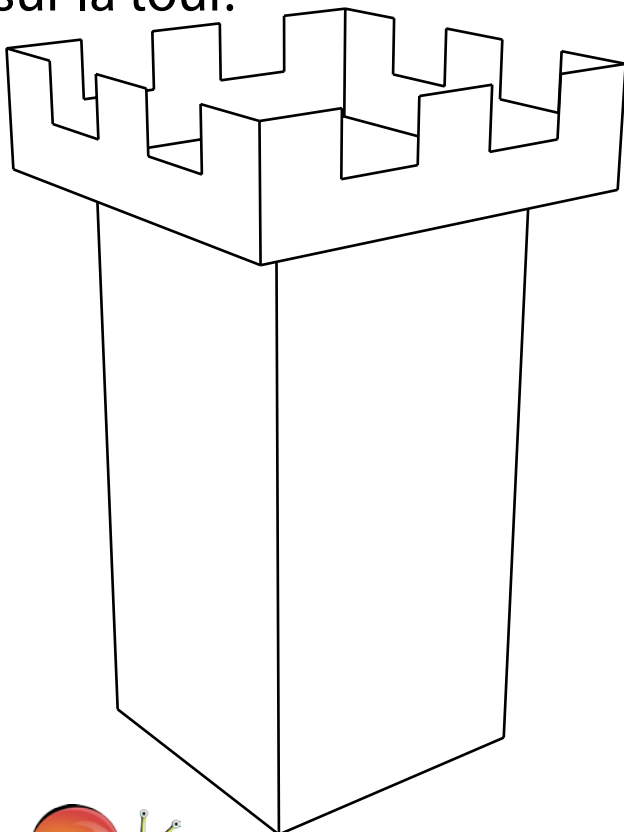


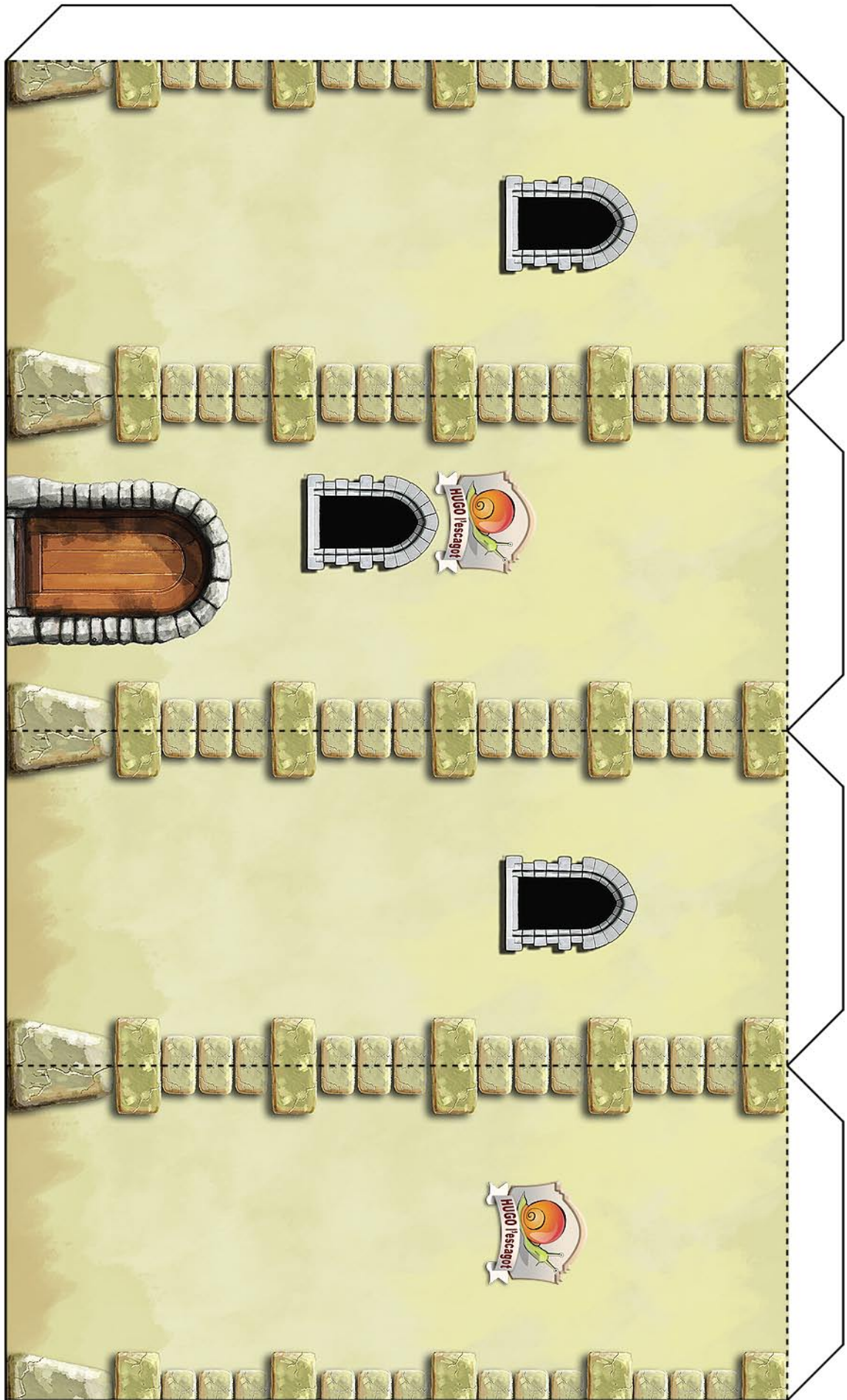
b.



c.

3. Coller les créneaux sur la tour.





Grande Tour: Les murs.

